



SIX YEAR WARRANTY



A Message from the President

Congratulations on purchasing an Anchor Audio Speaker Monitor, the choice of thousands of satisfied customers including the White House, prestigious universities, school districts nationwide, police and fire departments, and all branches of the U.S. Military. Our products are made of the finest materials and built with pride in the U.S.

We've incorporated the latest technology into your sound system yet kept it simple to use. Just take a few minutes to review this manual to ensure the maximum enjoyment of your Anchor system. Or, you can view a demonstration video complete with a trouble shooting section at www.anchoraudio.com.

Feel free to call our friendly customer support staff at 1-800-ANCHOR1 with any questions. We love to hear from our customers.

Janet Jacobs, President
on behalf of all Anchor employees

CONTENTS

GETTING STARTED	1
BASIC SYSTEM OPERATION / BALANCED INPUT JACK	2
OPERATING THE BUILT-IN UHF WIRELESS RECEIVER	3
OPERATING WIRELESS MICROPHONE/TRANSMITTER.....	4
IMPORTANT SAFETY INSTRUCTIONS	5
HAVING TROUBLE WITH YOU SOUND SYSTEM? / TECHNICAL SPECS	6

GETTING STARTED

Please check your new unit carefully for any damage which may have occurred during shipment. Each Anchor product is carefully inspected at the factory and packed in specially designed boxes for safe transport.

Notify the freight carrier immediately of any damage to the shipping box or product. Repack the unit in the original box and wait for inspection by the carrier's claim agent. Notify your dealer of the pending freight claim.

NOTE: All damage claims must be made with freight carrier!

RETURNING SYSTEMS FOR SERVICE OR REPAIR

For service or repair, please contact the dealer you purchased your system from or visit www.AnchorAudio.com to fill out an RA (Return Authorization) form. If your system is still under warranty, you will receive an RA Number with instructions to follow. All shipments to Anchor Audio must include an RA number and must be shipped prepaid. C.O.D. shipments and shipments without an RA number will be refused and returned at your expense.

IMPORTANT: Save the shipping box & packing materials, they were specially designed to ship your unit!

The AN-1000X+ Speaker Monitor comes with a six year warranty, the remote comes with a two year warranty, and wireless comes with a two year warranty.



SIX YEAR WARRANTY

BASIC SYSTEM OPERATION

The AN-1000X+ is the most versatile powered monitor on the market, is designed to amplify the signal from a wide variety of input sources. Use it on an A/V rack, as a studio monitor, in a trade show booth or on a US Navy warship, you decide.

Here's how easy it is to use:

1. Place the AN-1000X+ in desired location
2. Plug the power cord into a grounded AC outlet
3. Plug an audio source into one of the three input jacks on the back panel:
 - LINE IN - RCA jack
 - LINE IN - 1/4-inch phone jack
 - BALANCED INPUT* - XLR jack
4. Turn volume control on front panel to minimum
5. Set power switch on back panel to ON
(red LED on front panel should light)
6. Adjust the volume, bass & treble controls to desired levels

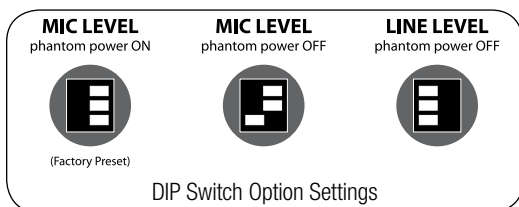
*BALANCED INPUT JACK

The balanced XLR input jack allows the AN-1000X+ to be used in a variety of applications. The input can be user configured for a Lo-Z microphone or bridging balanced line-level inputs (*such as used in the pro-audio and broadcast industry*). In addition, the input has 15 volt phantom power which may be switched on or off.

The factory default setting is for microphone-level inputs with 15 volts DC phantom power. Follow the instructions below to change settings.

Change Balanced Input Jack Configuration

1. Set the three dip switches with a small pointed object



BACK PANEL OF AN-1000XF1+

BALANCED INPUT

The balanced XLR input jack can be user configured for a Lo-Z microphone or bridging balanced line-level inputs. In addition it has 15 volt phantom power which can be switched on or off.

LINE OUT

The line-level output provides a replica of the composite input signal. Use it for direct recording or to daisy-chain additional powered sound systems to the AN-1000X+ for greater crowd coverage.

LINE IN

The line-level inputs (RCA & 1/4" phone) are used with input sources such as VCR's, CD players, musical instruments, computers, mixing consoles, etc. Both inputs can be used simultaneously with the AN-1000X+ volume knob controlling composite program output.

SPEAKER OUT

The external speaker output jack (1/4"-phone, unswitched) allows the user to power an auxiliary unpowered speaker (*such as the AN-1001X+*). Minimum 8 ohms impedance for auxiliary speakers.

POWER SWITCH



FEEDBACK

Feedback is a howling noise or shrill sound that is self-generated by the sound system. It is caused by a microphone picking up the sound coming from the speaker and then being re-amplified. Once a feedback loop is started it will continue until the system is adjusted.

FEEDBACK CAUSES

- Microphone too close, pointing towards or in front of the speaker
- Volume setting too loud for room
- Sound reflections from hard surfaces, walls, etc.

AVOIDING & ELIMINATING FEEDBACK

- Point the microphone in a different direction
- Keep the microphone away from the speaker; position speaker in FRONT of microphone
- Reduce the sound system volume level

CAUTION: Feedback can damage your equipment & may be hazardous to hearing.



SIX YEAR WARRANTY

DIVERSITY WIRELESS BY ANCHOR AUDIO

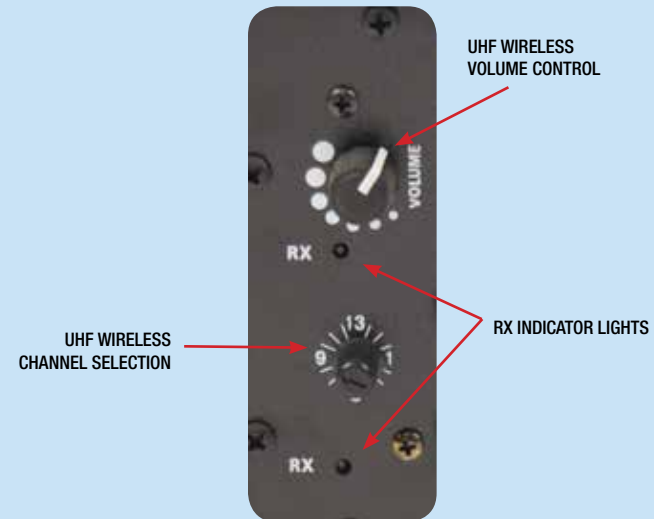
Anchor Audio UHF wireless is a 16 channel, diversity wireless system that receives signals with two independent antennae. With diversity wireless the receiver processes the stronger signal, effectively minimizing dropouts and interference from other transmitting sources. The antennae are mounted internally so there are no obstructions or risk of damage. The 8000 series wireless operates between 540 - 570 MHz.

CHANNEL SELECTION - BUILT-IN RECEIVER

Select a channel, set the built-in receiver & microphone transmitter to that channel before using your wireless system.

1. Choose any available wireless channel from 1 thru 16
(see page 4 for transmitter instructions)
2. Set the Wireless Channel Selection Knob to the channel you choose in step 1

If you have two wireless receivers repeat above for the second receiver. Remember, each receiver/transmitter pair must be set to different channels to avoid interference.



NOTE: Ongoing wireless interference? The frequency you selected may be in use by other systems in the area. Change channels until you find a clear frequency.



CONTROLLING FEEDBACK

Feedback, a howling noise or shrill sound, is self-generated by the sound system. It's caused by a microphone picking up the sound coming from the speaker and then re-amplifying it. Once a feedback loop starts, it continues until the system is adjusted.

FEEDBACK CAUSES

- Microphone too close, pointing towards or in front of speaker
- Volume setting is too loud for room
- Sound reflecting off hard surfaces

AVOIDING & ELIMINATING FEEDBACK

- Point microphone in a different direction
- Keep microphone away from the speaker
- Place speaker in FRONT of the microphone
- Reduce the sound system volume levels

CAUTION: Feedback can damage your equipment & may be hazardous to hearing.

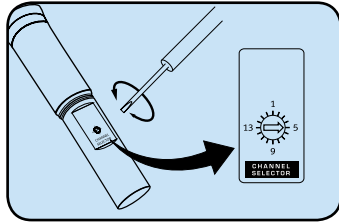
NOTE: If you experience ongoing interference with your wireless system, the selected frequency may be incompatible with other systems in the area. Try different channels to find a clear frequency.



OPERATING THE WIRELESS MICROPHONE/TRANSMITTER

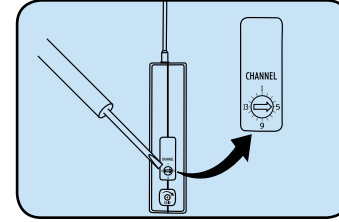
CHANNEL SELECTION - HANDHELD TRANSMITTER

1. Unscrew battery cover on bottom of microphone
2. Set the CHANNEL SELECTOR dial to match the channel setting of your receiver
3. Replace battery cover and tighten firmly



CHANNEL SELECTION - BODY-PACK TRANSMITTER

1. The channel selection dial is located on the side of the transmitter
2. Set the CHANNEL selection dial to match the channel setting of the receiver



NOTE: When using dual wireless, each microphone must be set to a different channel.

USING YOUR WIRELESS MICROPHONES

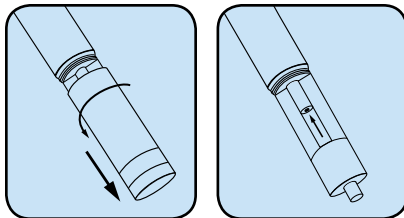
After you have set the transmitter channel (see above) you are ready to use your wireless microphone:

1. Body-pack transmitter users must insert the mic plug into the transmitter jack marked MIC
2. Push the transmitter power button for two seconds until ON (The red LED will stay on when the mic is turned on. If the red LED flashed, the battery is low)
3. Turn the AN-1000X+ power switch to ON
4. The RX indicators will light (*only one indicator will light at a time*) when the wireless signal is being transmitted and received

CAUTION: Harmful feedback may occur when walking in front of a sound system or speaker with a wireless microphone. Always point microphone away from speakers.

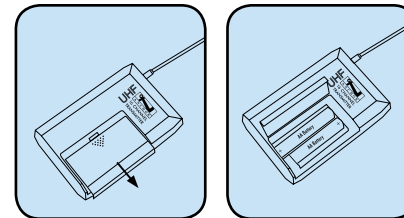
REPLACE BATTERY - HANDHELD TRANSMITTER

1. Unscrew battery cover on bottom of microphone
2. Replace old batteries with two fresh size 'AA' alkaline batteries
3. Replace battery cover and tighten firmly



REPLACE BATTERY - BODY-PACK TRANSMITTER

1. Slide open battery cover on front of transmitter
2. Replace old batteries with two fresh size 'AA' alkaline batteries
3. Replace battery cover by sliding firmly into place





SIX YEAR WARRANTY

Important Safety Instructions

- 1) **Read Instructions** – All the safety and operation instructions should be read before the product is operated.
- 2) **Retain Instructions** – The safety and operating instructions should be retained for future reference.
- 3) **Heed Warnings**- All warnings on the product and in the operating instructions should be adhered to.
- 4) **Follow Instructions** – All operating and use instructions should be followed.
- 5) **Cleaning** – Unplug this product from the wall outlet before cleaning. Do not use liquid cleaners or aerosol cleaners. Use a damp cloth for cleaning.
Exception: A product that is meant for uninterrupted service and that for some specific reason, such as the possibility of the loss of an authorization code for the CATV converter, is not intended to be unplugged by the user for cleaning or any other purpose, may exclude the reference to unplugging the product in the cleaning description otherwise in above 5).
- 6) **Attachments** – Do not use attachments not recommended by the product manufacturer as they may cause hazards.
- 7) **Water and Moisture** – Do not use this product near water – for example, near a bath tub, wash bowl, kitchen sink, or laundry tub; in a wet basement; or near a swimming pool; and the like.
- 8) **Accessories** – Do not place this product on an unstable cart, stand, tripod, bracket, or table. The product may fall, causing serious injury to a child or adult, and serious damage to the product. Use only with a cart, stand, tripod, bracket, or table recommended by the manufacturer, or sold with the product. Any mounting of the product should follow the manufacturer's instructions, and should use a mounting accessory recommended by the manufacturer.
- 9) A product and cart combination should be moved with care. Quick stop, excessive force, and uneven surfaces may cause the product and cart combination to overturn.
- 10) **Ventilation** – Slots and openings in the cabinet are provided for ventilation and to ensure reliable operation of the product and to protect it from overheating, and these openings must not be blocked or covered. The openings should never be blocked by placing the product on a bed, sofa, rug, or other similar surface. This product should not be placed in a build-in installation such as a bookcase or rack unless proper ventilation is provided or the manufacturer's instructions have been adhered to.
- 11) **Power Sources** – This product should be operated only from the type of power source indicated on the marking label. If you are not sure of the type of power supply to your home, consult your product dealer or local power company. For products intended to operate from battery power, or other sources, refer to the operating instructions.
- 12) **Grounding or Polarization** – This product may be equipped with a polarized alternating-current line plug (a plug having one blade wider than the other). This plug will fit into the power outlet only one way. This is a safety feature. IF you are unable to insert the plug fully into the outlet, try reversing the plug. If the plug should still fail to fit, contact your electrician to replace your obsolete outlet. Do not defeat the safety purpose of the polarized plug.
- 13) **Power-Cord Protection** – Power-supply cords should be routed so that they are not likely to be walked on or pinched by items placed upon or against them, paying particular attention to cords at plugs, convenience receptacles, and the point where they exit from the product.
- 14) **Protective Attachment Plug** – The product is equipped with an attachment plug having overload protection. This is a safety feature. See Instruction Manual for replacement or resetting of protective device. If replacement of the plug is required, be sure the service technician has used a replacement plug specified by the manufacturer that has the same overload protection as the original plug.
- 15) **Outdoor Antenna Grounding** – If an outside antenna or cable system is connected to the product, be sure the antenna or cable system is grounded so as to provide some protection against voltage surges and built-up static charges. Article 810 of the National Electrical Code, ANSI/NFPA 70, provides information with regard to proper grounding of the mast and supporting structure grounding of the lead in wire to an antenna discharge unit, size of grounding conductors, location of antenna-discharge unit, connection of grounding electrodes, and requirements for the grounding electrode. See Figure A.
- 16) **Lightning** – For added protection this product during lightning storm, or when it is left unattended and unused for long periods of time, unplug it from the wall outlet and disconnect the antenna or cable system. This will prevent damage to the product due to lightning and power-line surges.
- 17) **Power Lines** – An outside antenna system should not be located in the vicinity of overhead power lines or other electric light or power circuits, or where it can fall into such power lines or circuits. When installing an outside antenna system, extreme care should be taken to keep from touching such power lines or circuits as contact with them might be fatal.
- 18) **Overloading** – Do not overload wall outlets, extension cords, or integral convenience receptacles as this can result in a risk of fire or electric shock.
- 19) **Object and Liquid Entry** – Never push objects of any kind into this product through openings as they may touch dangerous voltage points or short-out parts that could result in a fire or electric shock. Never spill liquid of any kind on the product.
- 20) **Servicing** – Do not attempt to service this product yourself as opening or removing covers may expose you to dangerous voltage or other hazards. Refer all servicing to qualified service personnel.
- 21) **Damage Requiring Service** – Unplug this product from the wall outlet and refer servicing to qualified service personnel under the following conditions:
 - a. When the power-supply cord or plug is damaged.
 - b. If liquid has been spilled, or objects have fallen into the product.
 - c. If the product has been exposed to rain or water.
 - d. If the product does not operate normally by following the operating instructions. Adjust only those controls that are covered by the operating instructions as an improper adjustment of other controls may result in damage and will often require extensive work by a qualified technician to restore the product to its normal operation.
 - e. If the product has been dropped or damaged in any way.
 - f. When the product exhibits a distinct change in performance – this indicates a need for service.
- 22) **Replacement Parts** – When replacement parts are required, be sure the service technician has used replacement parts specified by the manufacturer or have the same characteristics as the original part. Unauthorized substitutions may result in fire, electric shock, or other hazards.
- 23) **Safety Check** – Upon completion of any service or repairs to this product, ask the service technician to perform safety checks to determine that the product is in proper operation condition.
- 24) **Wall or Ceiling Mounting** – The product should be mounted to a wall or ceiling only as recommended by the manufacturer.
- 25) **Heat** – The product should be situated away from heat sources such as radiators, heat registers, stoves, or other products (including amplifiers) that produce heat.



SIX YEAR WARRANTY

HAVING TROUBLE WITH YOUR SOUND SYSTEM?

CONDITION

No Sound (*Power LED Not Lit*)

POSSIBLE CAUSE

- turn POWER switch on
- plug in power cord
- check for blown fuse
- check for output from source
- make sure all cables are completely plugged in
- increase volume control
- check input cable connection
- lower input signal level
- use shielded input cable
- set balanced input to mic-level
- shorted speaker cable

No Sound (*Power LED Lights*)

Distorted Sound

Excessive Hum / Noise

Mic Volume Too Low

Blows Fuse w/ Auxiliary Speaker

HAVING TROUBLE WITH YOUR WIRELESS SYSTEM? (*Wireless Model Only*)

No Sound

- confirm transmitter power switch is set to on
- turn up volume control
- plug microphone into body-pack transmitter
- turn sound system on
- replace mic/transmitter battery
- make sure hands free mic cable is fully plugged into transmitter

Frequent Transmitter Dropouts

- replace mic/transmitter battery
- move mic/transmitter closer to AN-1000XF1+
- change transmitter to different channel

AN-1000X+ TECHNICAL SPECIFICATIONS

Rated Power Output	50 watts continuous @ 4Ω	<i>Inputs</i>	
Max SPL @ Rated Power	107 dB @ 1 meter	Balanced	female XLR, switchable phantom power, 15 volts DC @ 6.8 kΩ
Frequency Response	65 Hz – 20 kHz ± 3 dB	Mic-Level Setting	Lo-Z
Speaker Type	4.5" woofer with shielded magnet, 10mm dome tweeter	Line-Level Setting	Bridging (10 kΩ)
AC Power Reqs.	110 – 125Vac, 50/60 Hz, 90W	Line	Hi-Z, unbalanced, 1/4"-phone & RCA
Max		<i>Outputs</i>	
Export Model	208 – 240Vac, 50/60 Hz, 90W	Line (post fader)	Lo-Z, buffered, RCA
Max		Speaker	8Ω, unswitched, 1/4"-phone
Dimensions (<i>HWD</i>)	5.25" x 8.4" x 9" (13 x 21 x 23 cm)	<i>Sensitivity For Rated Output</i>	
Weight	9.5 lbs / 4.3 Kg	Line	balanced -18 dBv (125 mVrms)
<i>Tone Controls</i>		Microphone	balanced -56 dBv (1.5 mVrms)
Bass	+8 – 12 dB @ 100 Hz	Line	-18 dBv (125 mVrms)
Treble	+10 – 12 dB @ 10 kHz		



(Specifications Subject to Change Without Notice)

ANCHOR AUDIO CUSTOMER SERVICE
800.262.4671

FOR ADDITIONAL INFORMATION
visit www.anchoraudio.com